

This drawing is © C4 Projects and is not to be copied, reproduced or re-distributed either in whole or in part without the prior written permission of the originator.

The originator shall have no responsibility for any liability, loss, cost, damage or expense arising from or relating to any use of this document other than for its intended purpose on this project.

This drawing shall be read in conjunction with all other relevant drawings, specifications and associated documentation. Any discrepancies, errors or omissions are to be reported to the originator before proceeding with work.

All dimensions are to be checked on site by the contractor prior to proceeding with any work. This drawing shall not be scaled to ascertain any dimensions, work to figured dimensions only.

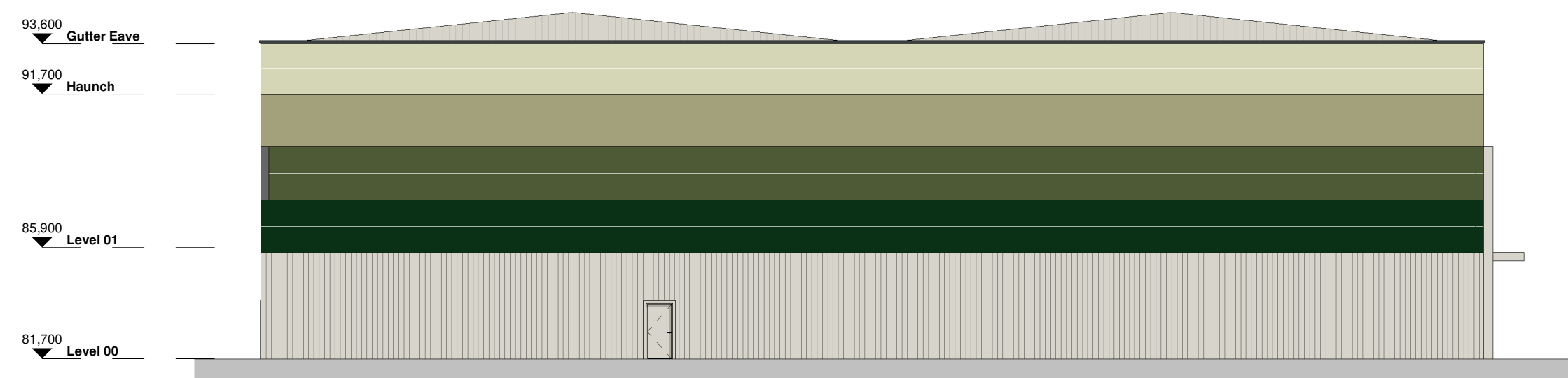
**DISCLAIMER**  
When this drawing is issued in CAD, it is an uncontrolled version issued for information only. To enable the recipient to prepare their own documents/drawings for which they are solely responsible.

**SOFTWARE INTEROPERABILITY**  
C4 Projects prepared this drawing using Autodesk REVIT Architecture.  
C4 Projects does not accept liability for any loss or degradation of any information held in the drawing resulting from the translation from the original file format to any other file format or from the recipient's reading of it in any other programme.

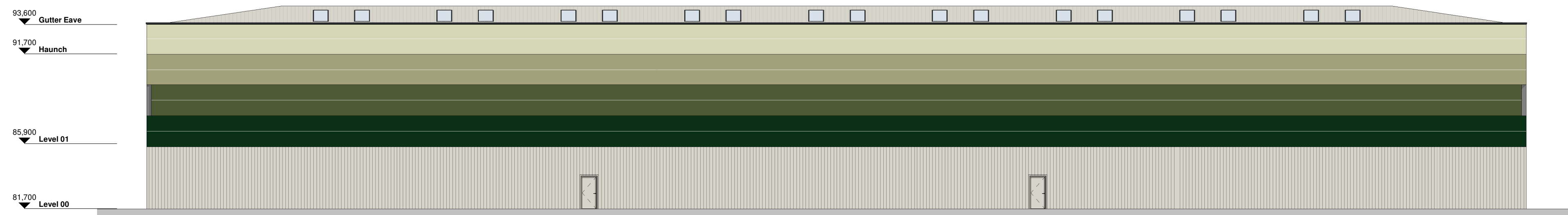
Hazard Identification		
ref	hazard	date



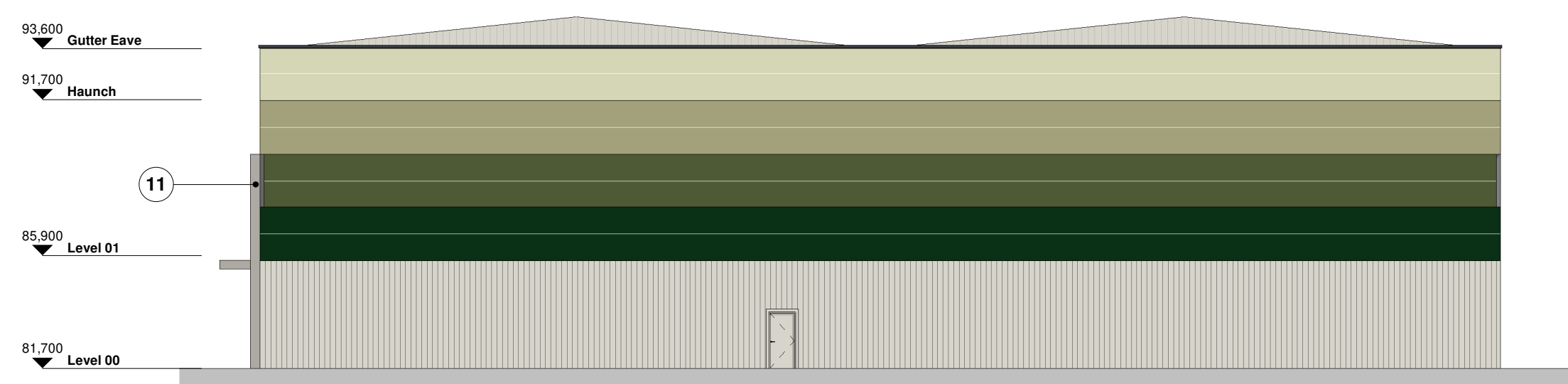
**A** 21-ZZ Elevation A -  
1 : 200



**B** 21-ZZ Elevation B -  
1 : 200



**C** 21-ZZ Elevation C -  
1 : 200



**D** 21-ZZ Elevation D -  
1 : 200

**ALL ELEVATIONAL TREATMENTS  
IN LINE WITH HISTORICAL PLANNING  
CONDITIONS**

P5	Amendments made to curtain walling to reflect levels.	AR	19.01.21	JC
P4	Cladding colours revised	AR	12.11.20	JC
P3	Minor amendments	AR	11.11.20	JC
P2	Revisions made to colours used across the building.	AR	24.09.20	JC
P1	First issue of drawing	AR	18.09.20	JC

Rev	Revision Details	Drawn	Date	Checked

**C4 Projects**  
Quayside,  
Widnespool Business Park,  
Stockton Heath,  
Warrington,  
Cheshire,  
WA4 6HL  
t: 01925 751 852  
e: info@c4projects.co.uk  
www.c4projects.co.uk

Project Management • Architecture • Building Surveying • Cost Consultancy

**Client**  
WGC Developments Ltd

**Project**  
Welwyn Garden City  
Cole Green Lane, AL7 4AL

**Drawing Title**  
Units 2 & 3\_Proposed Elevations

**Status Purpose of Issue**  
S2 SUITABLE FOR INFORMATION

Drawn by	AR	Created	25.08.2020
C4 Job no.	20-066	Scale	1 : 200 @ A1

Dwg no.	Rev
20066-C4P-V2-ZZ-DR-A-2150	P5